



# CT Meter

**For AC Current Measurement When Using Current Transformers**

**Easy to Use. Easy to Read.**

**High resolution 5A Input**  
for use with current transformers

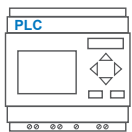
**0.5%**  
Accuracy



Programmable 4 digit  
star-burst display. Custom  
messages & annunciators



Alarm set points



2 outputs - digital  
and analogue

Less than  
53mm deep

**WIDE  
viewing angle**

**40**  
Segment curved  
bar graph display

Programmable backlight  
color to alert user



Warning  
flash



Programmable  
scale

Combined **digital and  
bar graph** display



USB port for custom user settings  
via the **free easy-to-use software**

**16**

Position switch for  
selecting standard  
configurations



Available in either

**POSITIVE**  
**NEGATIVE**



Full 4 digit readout for accuracy

**Featuring an acclaimed easy-to-read display, combined with easy-to-use programming software and a high resolution input, the CT Meter is the newest addition to the Advanced Panel Meter (APM) product group to measure current.**

The CT Meter is designed specifically for use with current transformers. When used with an external current transformer, it can accurately measure up to 10,000 amps. The CT Meter also provides a range of features, such as alarm set-points and three-color dynamic backlighting.

The customizable four-character message display and scalability enable users to tailor the meter to display critical parameters to their desired specifications. The set-points, coupled with the backlighting allows operators to be visually alerted when a parameter is out of range. The two outputs can be used to connect the APM to other systems in the process.

**Go to [www.trumeter.com/apm](http://www.trumeter.com/apm) for further information**

## Key Features

### Large multi-format display that incorporates:

- 40 segment bar graph display
- Large 4-digit display
- Separate Starburst display area for annunciators, custom messages and alarm information
- Dynamic backlight color

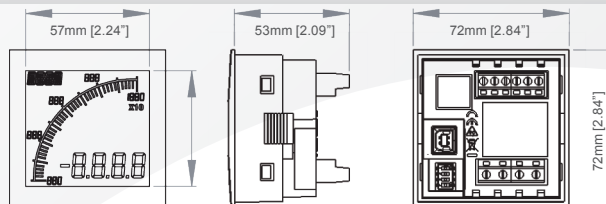
### Programmable:

- Display Range (Both Min & Max Values)
- Custom annunciators
- User-selectable backlight color and intensity
- Two independent alarm set-points
- Two independent outputs
- 4-20mA analog monitor output

### Visibility:

- User-adjustable backlight brightness and colour
- Large display
- Wide viewing angle (horizontal and vertical)
- Custom annunciators

### Dimensions:



Panel cutout: 68mm x 68mm [2.68" x 2.68"] as per DIN43700/IEC61554

#### INPUT

Range (CT Output Current)  
 Range (via External CT)  
 Accuracy

#### CURRENT

0 - 5A  
 0 - 10,000A  
 0.5%

#### ENVIRONMENTAL

Temperature - operating  
 Temperature - storage  
 IP rating (from the front)  
 NEMA rating (from the front)

-10 to +60°C  
 -40 to +70°C  
 IP65  
 Type 4 & Type 12

#### POWER SUPPLY

Nominal Input

12-24VAC or DC

#### DISPLAY

Number of digits  
 Digit height  
 Number of message characters  
 Backlight colours  
 LCD display

4  
 12mm [0.47"]  
 4  
 Red, Green, White  
 Positive or Negative

#### OUTPUTS

Max voltage  
 Max current  
 Analogue output

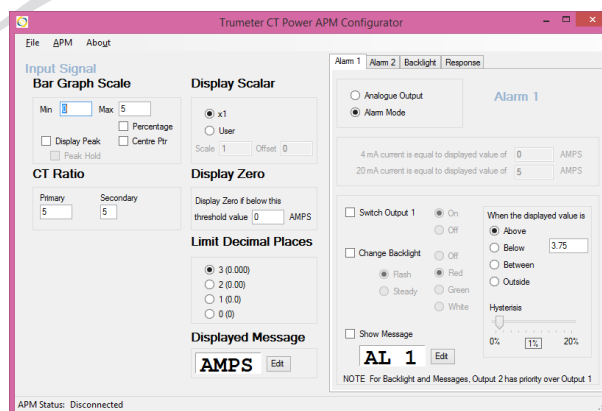
34V  
 500mA  
 4-20mA

#### CERTIFICATION

UL, cUL, CE

## Easy To Use Software

Just plug into any USB port on your PC, run the freely available APM Configurator application and you're off. No drivers required.



### Part Numbers:

APM-CT-APO  
 APM-CT-ANO  
 022128-01

APM CT Meter, Positive LCD, With Outputs  
 APM CT Meter, Negative LCD, With Outputs  
 USB Cable

### BY REQUEST: Modbus Connectivity

APM-CT-APS  
 APM-CT-ANS

APM CT Meter, Positive LCD with Modbus  
 APM CT Meter, Negative LCD with Modbus

Full specifications available online [www.trumeter.com/apm](http://www.trumeter.com/apm)



[www.trumeter.com](http://www.trumeter.com)

**Trumeter (The Americas)**  
 6601 Lyons Rd, Suite H-7  
 Coconut Creek, Florida  
 FL 33073,  
 USA  
 Tel: +1 954 725 6699  
 Email: [sales.usa@trumeter.com](mailto:sales.usa@trumeter.com)

**Trumeter (Europe)**  
 Trumeter  
 Pilot Mill, Alfred Street  
 Bury, Lancashire  
 BL9 9EF  
 Tel: +44 161 674 0960  
 Email: [sales.uk@trumeter.com](mailto:sales.uk@trumeter.com)

**Innovative Design Technologies Sdn. Bhd**  
 Lot 5881, Lorong Iks Bukit Minyak 1  
 Taman Perindustrian Iks, 14000 Bukit Tengah  
 Penang, Malaysia  
 Web: [www.idtworld.com](http://www.idtworld.com)  
 Tel: + 604 5015700  
 Email: [sales.my@idtworld.com](mailto:sales.my@idtworld.com)