

ORDER IT!

Ordering is Easy! See Page D-12.
Easy online ordering too!

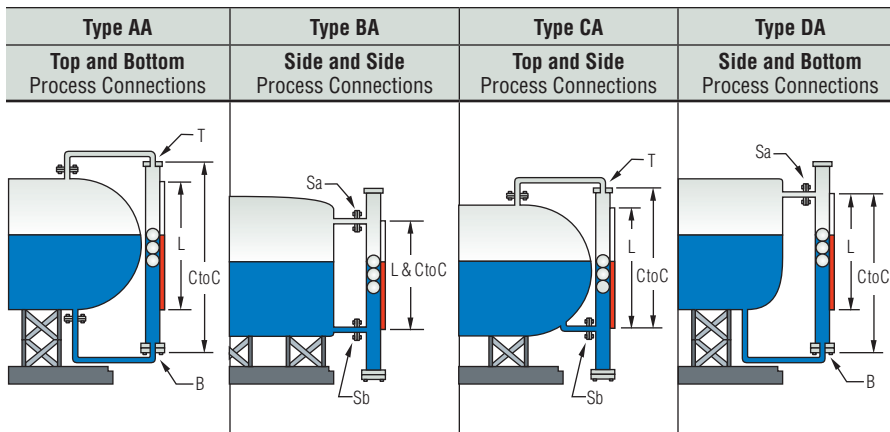
High Performance Versions – Standard Size

- ▶ Designed to meet the requirements of ASME B31.1/B31.3*
- ▶ Temperatures to 750°F (399°C)
- ▶ Pressures to 4200 PSI (290 bar)

For your most demanding applications, these SureSite® Indicators feature ANSI flanges and fittings and construction to rigorous ASME standards. You can't specify a better visual level indicator.

1. Mounting Configuration Types

To choose the best configuration for your application, focus on the process connections (connections where the liquid typically enters/leaves the SureSite).



L = Length of Visual Indication

	Type AA Top and Bottom Process Connections	Type BA Side and Side Process Connections	Type CA Top and Side Process Connections	Type DA Side and Bottom Process Connections
Typical Lengths†	C to C = L + 10-1/4" (260.4 mm)	C to C = L	C to C = L + 3-3/4" (95.2 mm)	C to C = L + 6-1/2" (165.1 mm)
Flag Material	Plastic (300°F/148.9°C) or Aluminum (750°F/399°C)			
Length of Indication (Uninterrupted)	240" (610 cm)			
Minimum Specific Gravity	0.39			

† Dimensions vary due to connections, material and specific gravity.

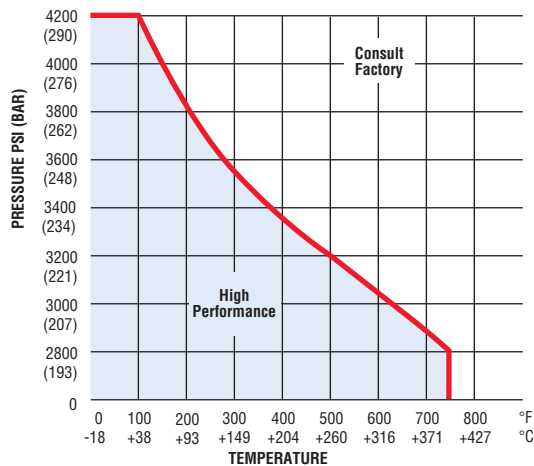
2. Material

Select desired material from those tabulated below. Mark the Code Number on your Order! Check List. The pressure/temperature performance parameters are specified in the chart at right. Consult the factory with pressure/temperature requirements that fall outside the parameters shown here. These units are manufactured in Schedule 40, 80 or 160 pipe accordingly.

= Stock Material (Best economy and delivery).

Materials		Code
Housing	Float	
316L Stainless Steel	316L Stainless Steel 600 psi –	2
316L Stainless Steel	Titanium (Ti-6Al-4V) 600 psi+	9

Note: Additional materials, floats, connections and manufacturing techniques are available to extend lengths and operational capabilities. Please contact Gems if the parameters above do not meet your requirements.







*Units requiring ASME certification must be specified at time of request.

LEVEL INDICATORS – VISUAL

3. Connection Codes

All connections comprised of ANSI fittings (See complete descriptions below)

	Blind		NPT				Flange		Weld			
	Fixed	Removable	Fixed		Removable		Fixed	Removable	Fixed		Removable	
			Female	Male	Female	Male			Socket	Butt	Socket	Butt
TOP  T	T15	T16	T17	T19	T20	T22	T23	T24	T25	T26	T27	T28
SIDE  Sa		T29			T30	T32		T33			T34	T35
SIDE  Sb												
BOTTOM  B	B15	B16	B17	B19	B20	B22	B23	B24	B25	B26	B27	B28
		B29			B30	B32		B33			B34	B35

	Blind		NPT		Flange		Weld	
	Male	Female	Male	Female	Socket	Butt	Socket	Butt
	S1	S2	S3	S4	S5	S6	S7	

— Connection Codes and Materials background-shaded in this color are readily available from Gems. Select these connections where possible to obtain the most economical SureSite Indicators.

Note: Gems recommends a removable top and/or bottom connection for float access.

Connection Code Descriptions

Please provide all connections when completing the Order! Product Check List.

Note: Before selecting your connections, consider incorporating your vent and drain requirements.

T & B (Top and Bottom)

- T/B 15. ANSI welded pipe cap
- T/B 16. ANSI fixed slip-on flange/blind mating flange
- T/B 17. ANSI welded pipe cap with FNPT
- T/B 19. ANSI welded pipe cap with MNPT nipple
- T/B 20. ANSI fixed slip-on flange/mating FNPT reducing flange
- T/B 22. ANSI fixed slip-on flange/mating flange w/MNPT nipple
- T/B 23. ANSI welded pipe cap with ANSI flange
- T/B 24. ANSI fixed slip-on flange/mating reducing ANSI flange spool
- T/B 25. ANSI welded pipe cap with socketweld coupling
- T/B 26. ANSI welded pipe cap with butt weld nipple
- T/B 27. ANSI fixed slip-on flange/mating flange with socketweld coupling
- T/B 28. ANSI fixed slip-on flange/mating flange with butt weld nipple
- T/B 29. ANSI fixed weldneck flange/blind mating flange
- T/B 30. ANSI fixed weldneck flange/mating FNPT reducing flange
- T/B 32. ANSI fixed weldneck flange/mating flange w/MNPT nipple
- T/B 33. ANSI fixed weldneck flange/mating reducing flange spool
- T/B 34. ANSI fixed weldneck flange/mating flange with socketweld coupling
- T/B 35. ANSI fixed weldneck flange/mating flange with butt weld nipple

Sa & Sb (Sides)

- S1. No connection
- S2. MNPT nipple
- S3. FNPT coupling
- S4. ANSI flange
- S5. Weldneck flange
- S6. Socketweld coupling
- S7. Butt weld nipple

Accessories – Pages D-16 to D-18

Make more of your SureSite® Indicator with the productivity-enhancing accessories found at the end of this section.

- **Indicating Scales**
Add graduations to your flag indication.
- **Switch Modules**
Control pumps, valves, alarms, etc. Mount externally on housing for infinite positioning.
- **Continuous Output Transmitters**
Signal conditioned for compatibility with most electronic instruments to 300°F (149°C).

<p>FAX IT! 860-747-4244</p> <p>Photocopy This Form Use one form for each product type you are selecting.</p>	<p>This is a <input type="checkbox"/> Request for a Quote <input type="checkbox"/> Order P.O.# _____</p> <p>Quantity Needed _____</p> <p>Date Required ____/____/____</p> <p>Shipping Method: _____</p> <p>Partials Accepted: <input type="checkbox"/> Yes <input type="checkbox"/> No</p>	<p>Name _____</p> <p>Company _____</p> <p>Street _____</p> <p>City _____ State ____ Zip _____</p> <p>Phone (____) _____</p> <p>Fax (____) _____</p>
---	--	---

SureSite Indicators, High Performance Versions

Process Conditions

This information is essential to the accurate and proper operation of your SureSite® Visual Level Indicators. Please complete fully and accurately.

1. **Pressure:** Operating _____ psig Maximum _____ psig
2. **Temperature:** Operating _____ °F Maximum _____ °F
3. **Liquid Media:** _____

Use this page for high performance units only.

4. **Specific Gravity @ Operating Condition:** _____
5. **Viscosity:** _____ SSU
6. **Application Location:** Indoors Outdoors

Physical Configuration

1. Mounting Configuration Types:

- Type AA Type BA Type CA Type DA

2. Housing and Float Material – Housing: 316L/SS

- Code 2 – 316L SS Float Code 9 – Titanium Float

3. Connection Codes – Complete all 4 connection code lines. Check off NPT or Flange size where appropriate.

▼ Connection Code Number Goes Here. **Connection Code Numbers and their descriptions are on Page D-11.**

Top T	NPT or Weld	Flange		
	<input type="checkbox"/> 1/2" <input type="checkbox"/> 1" <input type="checkbox"/> 1.5" <input type="checkbox"/> Other _____	<input type="checkbox"/> 1/2" <input type="checkbox"/> 1" <input type="checkbox"/> 2"	<input type="checkbox"/> 150# (RF) <input type="checkbox"/> 600# (RF) <input type="checkbox"/> 900# (RF) <input type="checkbox"/> Other _____	
Side Sa	NPT or Weld	Flange		
	<input type="checkbox"/> 1/2" <input type="checkbox"/> 1" <input type="checkbox"/> 1.5" <input type="checkbox"/> Other _____	<input type="checkbox"/> 1/2" <input type="checkbox"/> 1" <input type="checkbox"/> 2"	<input type="checkbox"/> 150# (RF) <input type="checkbox"/> 600# (RF) <input type="checkbox"/> 900# (RF) <input type="checkbox"/> Other _____	
Side Sb	NPT or Weld	Flange		
	<input type="checkbox"/> 1/2" <input type="checkbox"/> 1" <input type="checkbox"/> 1.5" <input type="checkbox"/> Other _____	<input type="checkbox"/> 1/2" <input type="checkbox"/> 1" <input type="checkbox"/> 2"	<input type="checkbox"/> 150# (RF) <input type="checkbox"/> 600# (RF) <input type="checkbox"/> 900# (RF) <input type="checkbox"/> Other _____	
Bottom B	NPT or Weld	Flange		
	<input type="checkbox"/> 1/2" <input type="checkbox"/> 1" <input type="checkbox"/> 1.5" <input type="checkbox"/> Other _____	<input type="checkbox"/> 1/2" <input type="checkbox"/> 1" <input type="checkbox"/> 2"	<input type="checkbox"/> 150# (RF) <input type="checkbox"/> 600# (RF) <input type="checkbox"/> 900# (RF) <input type="checkbox"/> Other _____	

4. **Length of Visual Indication – L:** _____ inches (240", Max.).
Connection to Connection Dimension – C to C: _____ inches.

5. Flag Type

Plastic flags available to 300°F (149°C). Specify aluminum flags for temperatures of 301°F to 750°F (149°C to 399°C).

- Plastic (Orange and White) Aluminum (Black and Silver)
 Non-Standard; Specify: _____ consult factory.

6. ASME Stamp Required

Special Instructions (Materials, Connections, etc.)

Accessories (Pages D-16 to D-18)

1. Transmitters (Continuous Electrical Indication):

- Low Temperature – 300°F (149°C) Explosion-Proof
 High Temperature – 750°F (399°C)

2. J-Box/Signal Conditioners Accessories:

- Terminal Strip 4-20 mA Output
 0-12 VDC Output 0-5 VDC Output

3. Power Supply:

- 115 VAC (Input) /24 VDC (Output)
 (Optional) 230 VAC (Input) /24 VDC (Output)

4. Switch Modules (Single Point): _____ Quantity (only if required)

- a. SPST SPDT DPDT 120 VAC DPDT 24 VDC
b. Standard – 300°F (149°C) Explosion Proof
 High Temperature – 750°F (399°C)

5. Indicating Scales:

- Feet and Inches Inches Metric Blank
 Custom Graduations; specify: _____

Please contact Gems for any configuration or special requirements not covered on this form. **800-378-1600**

Quote: \$ _____ Date Quoted: ____/____/____



Gems Sensors & Controls
One Cowles Road
Plainville, CT
06062-1198

tel 860.747.3000
fax 860.747.4244
www.gemssensors.com